



Earth Observation Laboratory



mark.cleverley@ecometrica.com

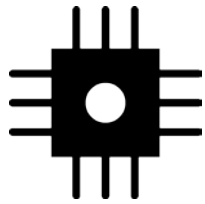
Who are we?



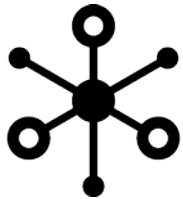
- Founded 2008
- Heritage in climate science
- Intuitive cloud-based tools and applications
- Corporate Sustainability and Earth Observation



The “landscape” of applications with which we can learn about environmental challenges is becoming richer:



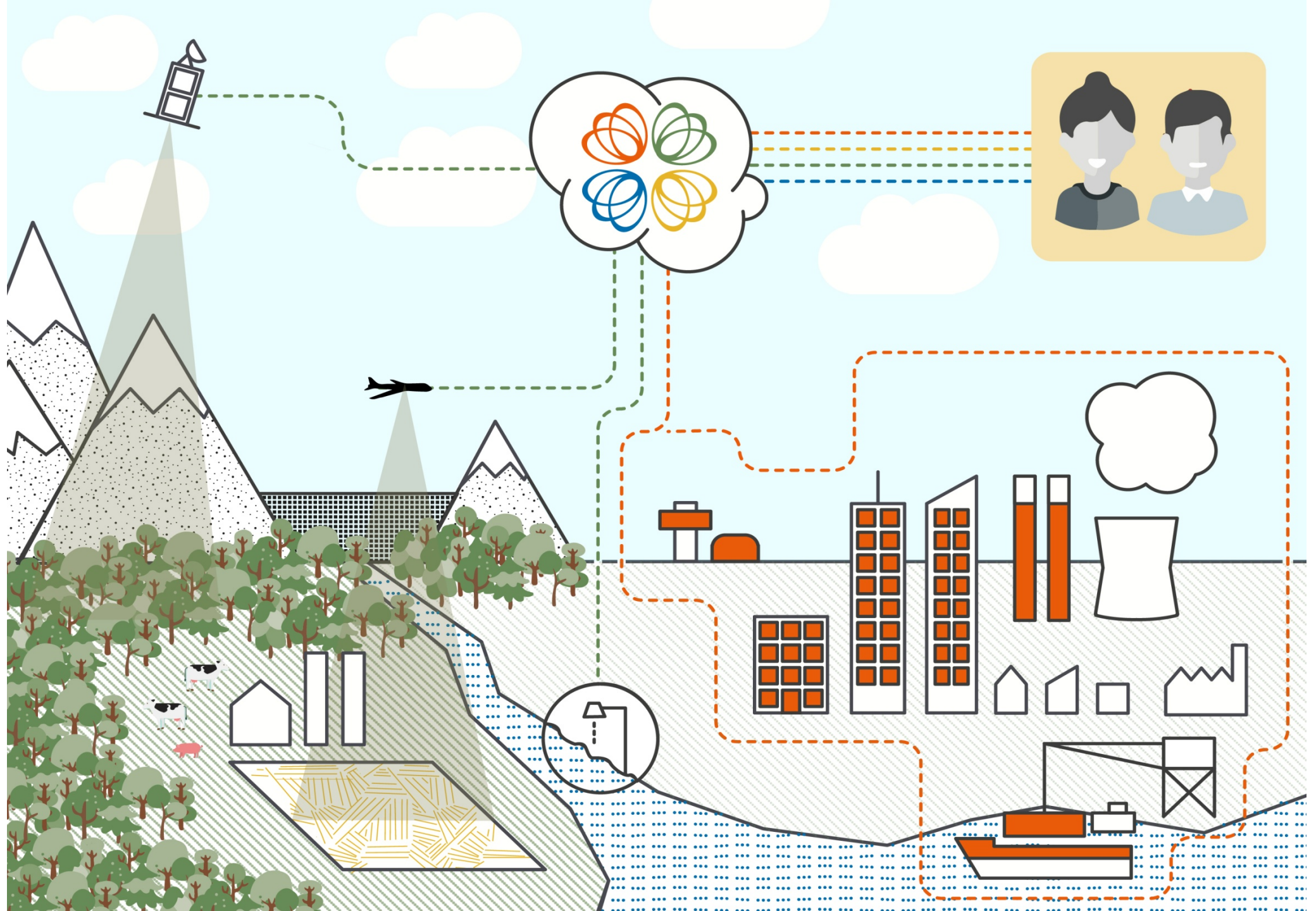
continuing instrumentation of the physical world through the proliferation of sensors



increasing interconnection of people, institutions and systems



broadening of access to high performance analytics



Earth Observation

Although 100 years old - EO introduces whole new classes of sensors

As it becomes more affordable its use will grow

Generates large amounts of (big) data

Initial uses are somewhat specialised –

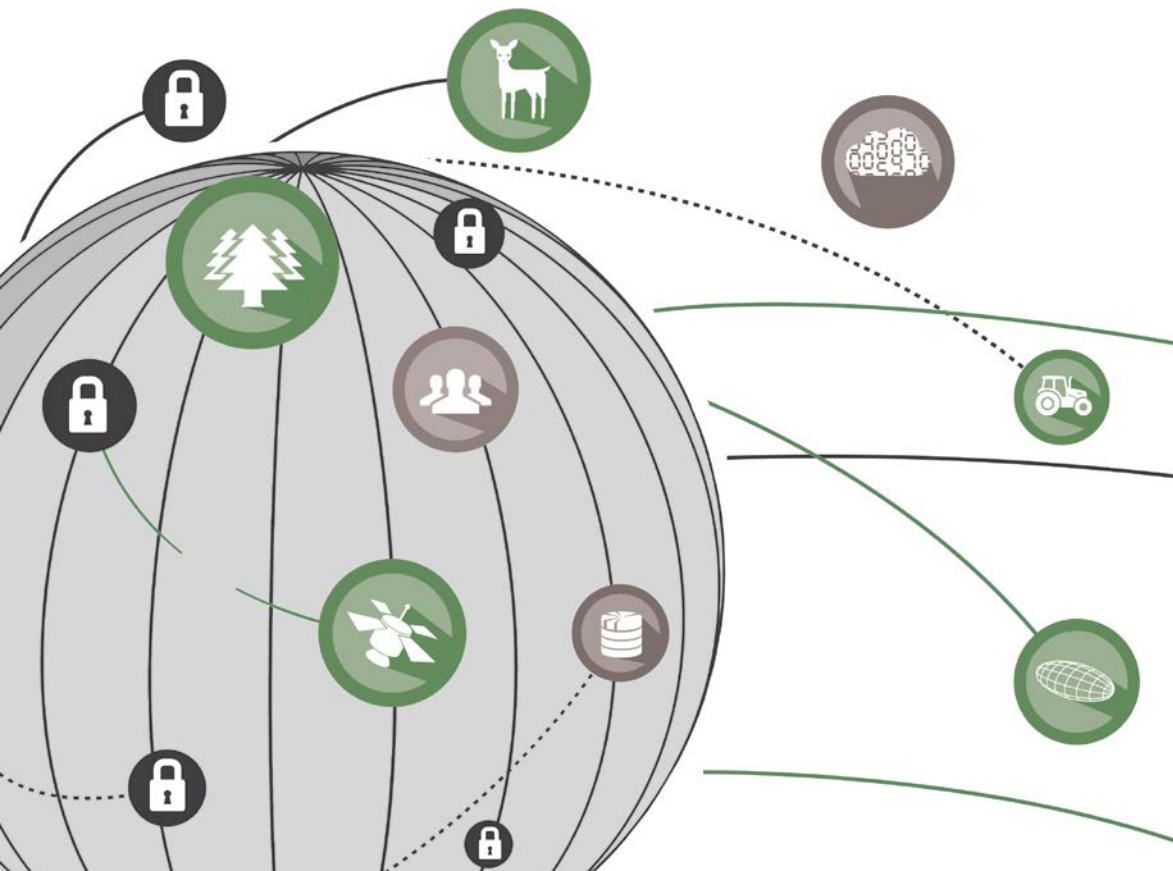
- Public sector, academia, NGOs - environment-related domains

But potential uses are significantly broader –

- Private sector – manufacturing, distribution, finance...

- Other public sector and academia – health, social sciences

Common challenges



Practitioners are specialists in their fields, but often lack the technology to support their skills and knowledge.

Creation of valuable content from large and growing volumes of EO-derived data needs easy to use, scalable-data management.

Making results persist prominently, and helping /influencing policy makers and the public requires engagement on their terms.

So:

We developed a large scale collaboration platform for spatial data content, to

Make EO data easily available and usable by a broader range of people, particularly non-expert users

Enable swift, low cost collaboration between partners on EO-related projects

Bring EO (and other RS data) to more and different users - for example in the corporate world, for supply chain analysis, climate-related risk assessment, asset location, forecasting, and so on...



Our solution

A cloud-based spatial content management system

Manages data at scale

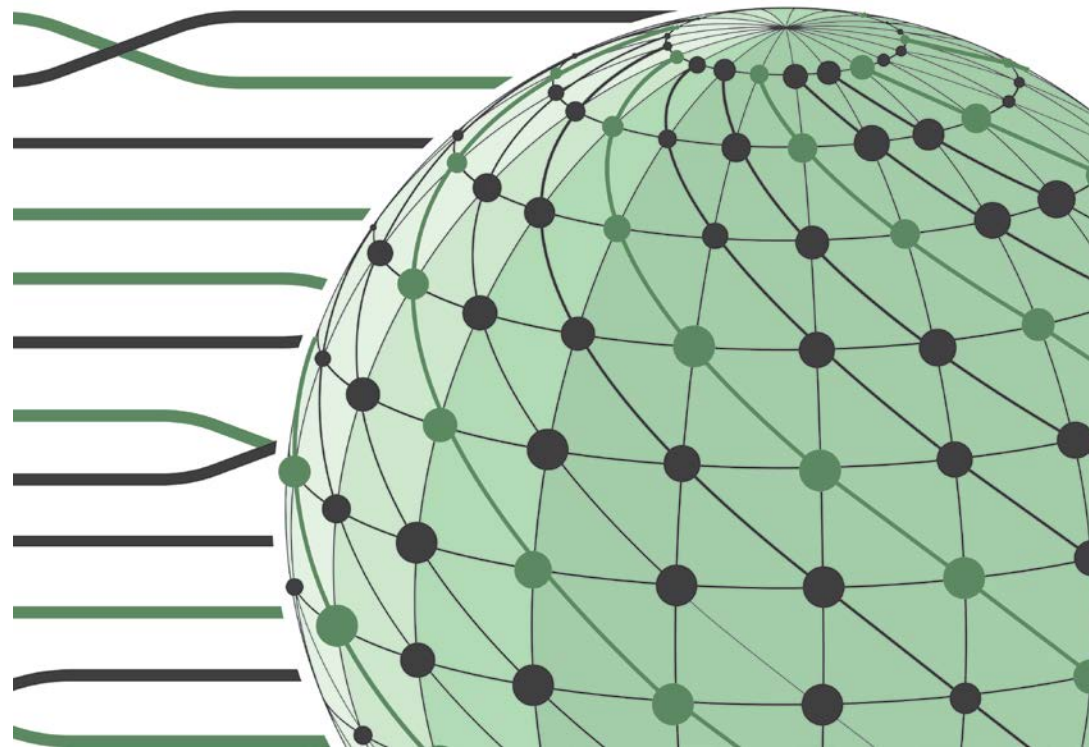
Simple browser-based interaction

No special software or technical knowledge

Multiple collaborative applications

Analysis and understanding

Publication and sharing

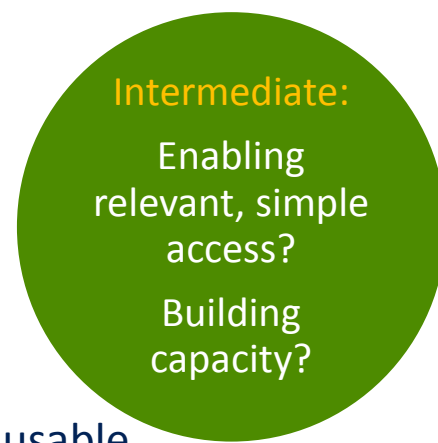


Move EO data management forward:

Fragmented
Incomplete
Offline
Version confusion
Siloed
Incompatible
Obsolete

Organised
Complete
Connected
Controlled
Accessible
Queryable

Research Benefits



- Make outputs easily usable
- Increase impact of research
- Improve collaboration with partners
- Help commercialise outputs
- Connect to policy makers and business

- Attract research funds
- Attract new students

The image shows a top-down view of a tropical forest. The trees are densely packed, and the ground is visible in some areas. A white rectangular box is superimposed over the center of the image, containing the text 'Forests 2020'. The word 'Forests' is in a large, bold, black font, and '2020' is in a smaller, bold, black font. The background of the text is a white rectangle.

Forests 2020

UK Space Agency International Partnership Programme

Forests 2020 is a major investment by the UK Space Agency to help protect and restore up to 300 million hectares of tropical forests by improving forest monitoring in six partner countries through advanced uses of satellite data.

Earth Observation team from University of Leicester visits Mexico to test deforestation detection by satellites

[Home](#) / [News](#) / [Articles](#) / [Earth Observation team from University of Leicester visits Mexico to test deforestation detection by satellites](#)

[◀](#) [UK SPACE AGENCY SUPPORTS MEXICO WORKSHOP ON EARTH OBSERVATION PLATFORMS FOR FORESTS & LAND USE](#)

[ECOMETRICA BECOMES FIRST GOLD SOFTWARE PARTNER FOR CDP'S WATER AND FORESTS PROGRAMMES](#) [▶](#)

A team of researchers from the University of Leicester, led by Professor Heiko Balzter and accompanied by Roselin Rodríguez García, Technical Co-ordinator of the GEF-Ambio El Ocote Conservation Project, visited Mexico in February as part of a UK Space Agency international partnership space programme (IPSP) project to Advance the Application of Earth Observation to Forests.



UNIVERSITY OF
LEICESTER



ecometrica

RECENT POSTS

[Ecometrica Platform triumphs at Environmental Leader Awards for the second year running](#)

[Ecometrica lands on FT1000 list of Europe's fastest growing companies](#)

[Ecometrica secures breakthrough](#)

Professor Heiko Balzter

Director of Centre for Landscape and Climate Research,

Leicester Institute for Space and Earth Observation & Department of Geography

NERC National Centre for Earth Observation

[https://easos.le-ac.ourecosystem.com/interface/](https://easos.le.ac.ourecosystem.com/interface/)